



## SPRING 2026 NEWSLETTER



### FROM THE EXECUTIVE DIRECTOR

At NEOnet, we remain focused on one clear purpose, improving education through the use of technology. Every service we design, every partnership we build, and every investment we make supports our districts so educators can focus on student success. We continue to strengthen security, expand services, and develop solutions that reflect the real operational needs of Ohio schools.

This Spring 2026 Newsletter highlights the work underway across our organization. Security remains a top priority. On page 2, you will find an overview of Distributed Denial of Service protection and how we continue strengthening both internal and external safeguards to protect network availability. On page 6, we explain the upcoming 47 day certificate changes and what districts should begin preparing for now. Page 4 highlights Secure Files, our encrypted file transfer solution available at no cost to member districts to protect sensitive student and staff information.

We also continue building solutions specifically for Ohio schools. On page 3, you will learn about our expanded Unified Login system built on miniOrange. Because our development team enhanced this platform internally, we can respond quickly to district feedback, adjust to legislative changes, and refine the user experience without waiting on outside vendors.

Infrastructure planning and cost management remain essential. On page 5, we address rising memory costs and outline how our consortium based Secure Server Hosting model allows districts to manage refresh cycles strategically while controlling long term expenses and maintaining enterprise level performance and compliance.

Professional learning and instructional innovation continue to grow. Pages 7 and 8 highlight NEOTech 2026, our regional conference focused on practical classroom technology strategies. You will also find updates on our new Learning Management System, strategic Google Gemini implementation, and expanded AI integration within Google Workspace for Education.

Student Services and EMIS updates begin on page 10. We outline important assessment season reminders, Pre Identification guidance, CLEP score collection updates, DataMap Multiple Measures tools, and Student Assessment Services support options. These updates help districts remain accurate, compliant, and prepared during a busy reporting season.

This edition reflects the broad scope of work across NEOnet. Maintaining open communication with our owners remains essential. If you have any questions, ideas, or district needs as you read through this newsletter, please contact me at [gdivin@neonet.org](mailto:gdivin@neonet.org).

**Remember, without you, there would be no NEOnet. Matthew Gdivin, Executive Director**

# Understanding DDoS Attacks and Why Protection Matters

CHRIS ZOLLA

Distributed Denial of Service, or DDoS, attacks are one of the most common and disruptive threats facing NEOnet's network. While the term is used frequently, it is important to understand what a DDoS attack actually is, how it impacts critical infrastructure such as firewalls, and why the threat landscape has changed in recent years.

At its core, a DDoS attack is an attempt to overwhelm a system with traffic. Instead of coming from a single source, attackers use many systems at once, often compromised devices spread across the internet, to flood a target with connection requests or data. The goal is not to gain access, but to exhaust system resources so legitimate users can no longer connect.

Firewalls are often the first line of defense for inbound traffic, but they are not immune to this type of pressure. Modern firewalls track connections using session tables. Each new connection consumes memory and processing resources. During a DDoS event, a firewall can be forced to track an enormous number of sessions in a very short period of time. This condition, known as session overload, can result in slowdowns, dropped connections, or service interruptions even when the traffic itself is not malicious in content.

Historically, DDoS attacks were primarily external, originating from the public internet and targeting exposed services. In the recent past, we have increasingly seen DDoS conditions generated from inside the NEOnet network. Misconfigured devices, compromised endpoints, poorly behaving applications, and even legitimate systems under stress can generate traffic patterns that overwhelm internal firewall interfaces just as effectively as an external attacker.

To address both scenarios, NEOnet uses a layered approach. Firewall based DDoS policies help identify and block internal attack conditions, while dedicated DDoS mitigation appliances at the network edge protect against large scale external attacks.

These DDoS mitigation appliances are purpose built to absorb, analyze, and filter massive volumes of traffic before it ever reaches the firewall. By offloading this work, they protect firewall session tables, preserve processing capacity, and ensure security controls can continue performing their intended functions. Inspecting traffic, enforcing policy, and keeping services available.

Security is not static. Attack methods evolve, traffic patterns change, and the way networks are used today is very different from even a few years ago. That is why NEOnet continuously evaluates and improves its security posture. From strengthening edge defenses to refining internal protections, our focus remains the same. Protecting availability, safeguarding our infrastructure, and ensuring our customers can rely on the services we provide.

# Built for Ohio Schools. Built by NEOnet.

ANDY MELICK

NEOnet already provides the miniOrange multi-factor authentication (MFA) and single sign-on (SSO) platform to our member districts at no cost. Now, we're excited to share something even bigger.

Behind the scenes, our in-house software development team has expanded miniOrange with a powerful, custom-built Unified Login system designed specifically for the real-world needs of NEOnet school districts.

## WHY DOES THAT MATTER?

Because we didn't buy a one-size-fits-all solution. We built enhancements ourselves. That means we're not waiting on outside vendors or limited by generic designs. We can improve, adjust, and fine-tune the system based on your feedback and the unique challenges your districts face.

And we have been listening.

## WHAT DOES THIS MEAN FOR YOU?

This expansion brings:

- A smoother, more seamless login experience
- Simpler, customized sign-in processes for staff
- Synchronization across all of your authentication systems
- Protection for user accounts when usernames change
- Smarter handling of shared or complex login situations
- Cleaner, account provisioning

In short, fewer login headaches and more consistency behind the scenes.

Because this system is developed internally, NEOnet can quickly adapt to new security requirements, legislative changes, and unique district scenarios without waiting for vendor updates.

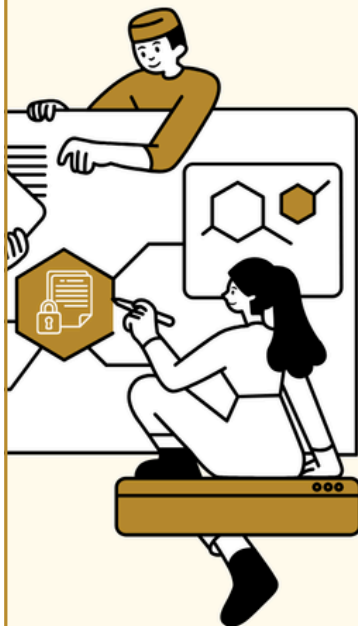
## THE RESULT?

A secure, flexible identity system built around how Ohio districts operate, not how a software company assumes they should.

We're just getting started! Reach out to [miniOrange@NEOnet.org](mailto:miniOrange@NEOnet.org) to learn more.

# SECURE FILES

SEND & RECEIVE SENSITIVE INFORMATION WITH CONFIDENCE



## WHAT IS SECURE FILES?

Secure Files is a NEOnet-provided secure file sharing system designed to protect sensitive information. It allows you to send and receive confidential documents using encrypted links instead of traditional email attachments.

Whether you are sharing or collecting important documents, Secure Files ensures information is delivered safely, securely, and with confidence.

## WHEN SHOULD YOU USE IT?

If the file contains private, regulated, or confidential information, Secure Files is the right choice.

### Use Secure Files when sharing or collecting:

- Payroll, Vendor, or audit documents
- Student records, IEPs, or health documentation
- HR and personnel files
- Banking or financial information
- Technical or protected system-related files

“When accuracy, privacy, and confidentiality matter most, use Secure Files.”

## MORE THAN SENDING FILES

**Securely Request Files** - Send a secure upload request by email or generate a link to share with a parent, vendor, and staff.

**Know When It's Opened** - Receive a confirmation email when your secure message is accessed — so you know it was delivered and viewed.

**Added Peace of Mind** - Important documents shouldn't leave you wondering. Secure Files provides protection, confirmation, and confidence in every exchange.



Questions? Contact  
NEOnet Support  
help@neonet.org

Start Sending Securely Today!

[securefiles.neonet.org](https://securefiles.neonet.org) 🔍

# Rising Memory Costs and Infrastructure Refresh Challenges

TIM TRACY

Organizations across the technology sector are experiencing short term increases in infrastructure costs, particularly in memory pricing. These increases are being driven by global demand from artificial intelligence and high performance computing, constrained manufacturing capacity, and transitions to newer memory technologies. While these market conditions are expected to stabilize over time, they have created near term challenges for organizations planning server and storage investments.

For NEOnet, these conditions reinforce the importance of a shared, consortium based hosting model. Rather than each member independently absorbing rising hardware, maintenance, and refresh costs, NEOnet's hosting services allow infrastructure investments to be centralized, optimized, and shared across the membership. This approach significantly reduces total cost of ownership while maintaining enterprise grade performance, security, and reliability.

NEOnet has reached the end of its current infrastructure lifecycle and is preparing for a planned refresh of its server and storage environment. While market conditions have increased the cost of individual components, the hosted model allows NEOnet to strategically design platforms that maximize efficiency and extend value across multiple services and districts. By consolidating workloads, right sizing resources, and leveraging shared redundancy, NEOnet can reduce overall expenditures even during periods of market volatility.

By increasing the use of NEOnet's hosting services, members can directly offset rising infrastructure costs without sacrificing reliability or security. Centralized hosting reduces the need for individual hardware refreshes, minimizes duplicated investments, and spreads costs across the consortium. In an environment where technology expenses are increasing across the board, this model provides a practical and proven way to control long term costs while continuing to meet operational and instructional needs.

## NEONET'S SECURE SERVER HOSTING

NEOnet's Secure Server Hosting provides districts with enterprise compute in a hardened, segmented environment, with integrated Backup as a Service to ensure data resilience and compliance.

### Key Highlights:

- Modular, scalable compute infrastructure (scale up or down, pay for what you use)
- Advanced distributed firewall
- Three-tiered backup: primary + disaster recovery + immutable cloud copy
- NIST 800-53 Rev. 5 aligned | 24/7 SOC monitoring

# 47 Day Certificates

BEN CLAUSSEN

For years, public TLS certificates commonly lasted for up to 39 months (3.25 years). In 2018, the CA/Browser forum announced a cut to 825 days, and in 2020, Apple announced that certificates issued after September 2020 should have a validity period of no more than 398 days. This was eventually rolled into ballot SC-081v3 of the CA/Browser forum, finalizing a plan to reduce certificate validity to 47 days by 2029, and was approved in April 2025.

Enforcement dates for max validity:

- March 15, 2026 - 200 days (this coming March!)
- March 15, 2027 - 100 days
- March 15, 2029 - 47 days

Shorter lifetimes are basically **risk-reduction**:

- **Compromised keys hurt for less time.** If a private key leaks, the cert naturally “dies” sooner.
- **Faster ecosystem agility.** When the industry must react (to bad validation practices, CA incidents, or algorithm migrations), shorter lifetimes reduce the time the old state lingers.
- **Less reliance on revocation being perfect.** Revocation has real-world reliability and deployment issues; expiration is the blunt instrument that always works.

The benefits of this outweigh the consequences of long-lived certificates, at the potential expense of more work. To mitigate the “more work”, this has pushed the industry to adopt the Automatic Certificate Management Environment (ACME) protocol to automate certificate issuance. There are a variety of methods of validation to prove you own a domain, including HTTP and DNS validation.

**Issuance is the easy part; deployment is the hard part.** Windows and Linux servers can use clients such as Winacme or Certbot to automate certificate issuance and application, but appliances can be tricky to manage. Vendors will need to implement automation methods via APIs or even native ACME integration. For those vendors who live under a rock and think TLS doesn’t apply to them, you may need to put their devices behind reverse proxies such as Caddy.

NEOnet is here to help with certificates. We have been actively moving our services to utilize LetsEncrypt for a few years and can provide guidance as time moves closer to 47-day certificates. Send an email to [technicalhelp@neonet.org](mailto:technicalhelp@neonet.org) with any questions, and we will be happy to assist!

# Technology Integration

JULIA TILTON & DAN NIESSEN

## NEOTECH 2026 CONFERENCE HIGHLIGHTS

The annual NEOTech conference is a major event for educators in Northeast Ohio, offering a dedicated space to explore the future of classroom technology. NEOTech is scheduled for March 10, 2026, at Kent State University, and registration for free tickets is open now. This year's conference will feature a virtual Keynote presentation by Amanda Bickerstaff, Co-Founder and CEO of AI for Education.

Learn more at [NEOTechConference.org](https://NEOTechConference.org).

## NEW NEONET LMS

NEOnet has introduced a free beta version of its updated Learning Management System designed to streamline professional development for staff. This platform contains a vast library of over 80 recorded webinars, allowing educators to access training resources at their convenience. Educators from NEOnet member schools can currently explore the new system by logging in with their NEOnet credentials. Those who complete sessions within the platform will receive CEU certificates of completion to document their learning.

Visit [learn.neonet.org](https://learn.neonet.org) to get started.

## STRATEGIC IMPLEMENTATION OF GOOGLE GEMINI

Google Gemini has become a central tool for many educators because it meets essential criteria for data privacy, performance, and administrative control. As a core Google service, it offers the same enterprise-grade data protections as Google Drive and Docs, ensuring that conversations are not shared externally or used to train future AI models. Administrators have the ability to manage access for their specific users, and the tool consistently ranks near the top of various AI performance benchmarks. The interface includes advanced features such as a guided learning mode, deep research capabilities, and the ability to generate images or audio overviews.

## ENHANCED AI INTEGRATION IN GOOGLE WORKSPACE

Recent upgrades to the free tier of Google Workspace for Education have brought Gemini directly into standard productivity apps. For instance, users can now use Gemini within Gmail to summarize long email threads or draft responses, regardless of their license type. A new integration also allows educators to use the classroom command in a Gemini chat to quickly check on student assignment deadlines or submission statuses. Furthermore, a partnership with The Princeton Review has added full-length SAT practice tests to the Gemini interface, providing students with immediate feedback and detailed explanations.

Reach out to Dan Niessen, Senior Technology Integration Specialist, to schedule a Google Gemini training session: [dniessen@neonet.org](mailto:dniessen@neonet.org).

Please feel free to contact Dan Niessen or Julia Tilton to discuss any EdTech training needs: [dniessen@neonet.org](mailto:dniessen@neonet.org) or [jtilton@neonet.org](mailto:jtilton@neonet.org).



**Date: Tuesday, March 10, 2026**

**Time: 7:30 AM – 3 PM**

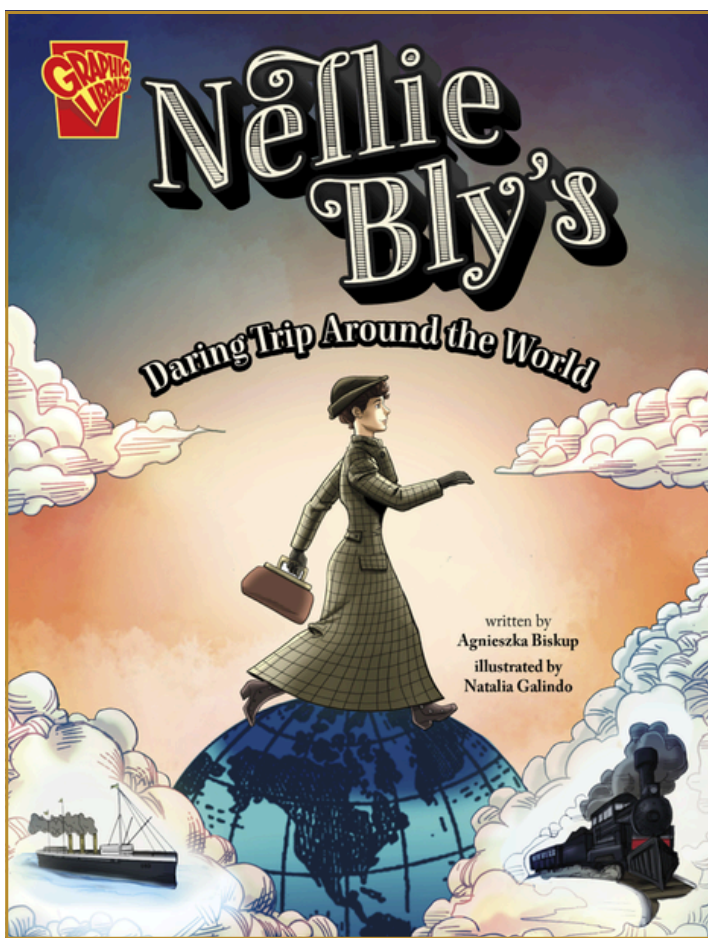
**Location: Kent State University Student Center**

**Register for FREE here:**  
**<https://bit.ly/NEOTech26>**

# Travel the World with Nellie Bly Using CultureGrams and INFOhio eBooks

TAMRA DUGAN

Begin an unforgettable journey alongside pioneering journalist Nellie Bly as she races around the globe in [\*\*Nellie Bly's Daring Trip Around the World\*\*](#), a nonfiction graphic novel that brings her adventure to life. Pair her story with [\*\*CultureGrams: World Edition\*\*](#) and [\*\*States Edition\*\*](#) and curated INFOhio eBooks to explore the cultures, geography, and history of the places she visited—and discover fascinating details that connect the past to the present.



**CultureGrams: World Edition** features detailed cultural reports for over 200 countries, organized into 25 easy-to-navigate categories. Topics include Land and Climate, History, Greetings, Family, Diet, Housing, Holidays, Economy, Education, Health, and more.

**CultureGrams: States Edition** offers colorful, student-friendly reports for every U.S. state and the District of Columbia, complete with maps, flags, symbols, timelines, and sections on history, geography, population, and economics.

## WHO WAS NELLIE BLY?

Born Elizabeth Jane Cochran on May 5, 1864, she took the pen name [\*\*Nellie Bly\*\*](#) when she began her first job in journalism as a writer for the Pittsburgh Dispatch in 1885. Wanting bigger and better things in her career, she left the Dispatch and got a job at the New York

World. Inspired by Jules Verne’s novel [Around the World in Eighty Days](#), Nellie Bly—a trailblazing journalist in a male-dominated field—set out to beat the fictional journey in real life. In 1889, she began her 72-day trip around the world, departing from Hoboken, New Jersey, by steamship. Along the way, she traveled by train, ferry, and ship through Europe, Asia, and the United States, documenting her experiences and captivating readers around the world. The graphic novel provides this as Nellie's itinerary:



This global adventure blends biography, geography, and cultural exploration—inviting students to follow Nellie Bly’s daring journey while building research skills and global awareness along the way. CultureGrams is full of information to help you learn more about our world. Whether you are trying to plan your next vacation or just want to browse and look through all of the amazing places, CultureGrams: Kids, Provinces, States, and World Editions can help with both.

# Student Assessment Season

## STUDENT AND EMIS SERVICES

As student assessment season ramps up, districts are preparing for multiple state assessments. This time of year brings important deadlines, system updates, and new data-reporting requirements essential to accurate accountability and graduation reporting. Below are several key updates to keep on districts' radar as you plan for the coming months.

### PRE-IDENTIFICATION FILES FOR SPRING ASSESSMENTS

The Spring End-of-Course Exams and Spring Next Generation Assessments are just around the corner. Districts should begin preparing now to ensure a smooth process. Pre-identification (Pre-ID) files will need to be uploaded into TIDE. Verifying student data in advance will be beneficial for reporting accurate scores. If the student is included in the Pre-ID file and uploaded to the vendor, DEW will expect a Score or a Score Not Reported Reason.

The NEOnet Student Services team offers a How to Use Frontline SIS and SameGOAL to Generate Pre-Identification Files course, along with supporting materials, on our website:

<https://access.neonet.org/courses/using-dasl-sis-for-pre-identification-files/>

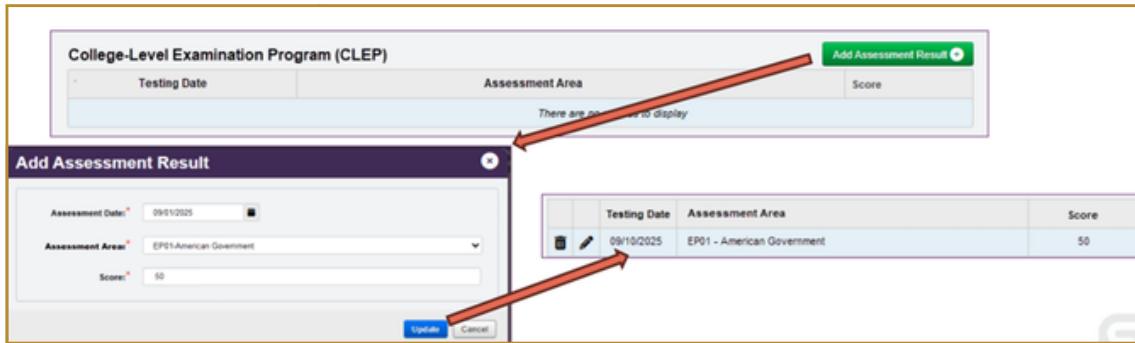
### NEW CLEP SCORE COLLECTION IN EMIS

EMIS is expanding its assessment capabilities to include scores from the **College-Level Examination Program (CLEP)**.

As part of the **DASL/SI 25.2.0 Updates**, a new CLEP assessment is being introduced with the following features:

- A new maintenance screen will be available within the Assessments module to support CLEP data entry. Please note that **CLEP results will be entered manually**, as no results file is available for upload.
- Forty new assessment area codes.
- A new assessment type code (CL) is included in the FA transfer process.

Reporting in both Other Accountability Assessments (A) and Graduation (G) collection windows.



## DATAMAP MULTIPLE MEASURERS

Districts utilizing DataMap have an incredible advantage for analyzing their students' 25/26 Third Party/District Assessment data, and 24/25 State Assessment results to view their students' progress toward the 25/26 State Assessment.

Using Multiple Measures will give you the data you need, whether a Teacher is viewing the data for their individual class or an Administrator is reviewing student progress by grade level. First, navigate to: Analysis > **Multiple Measures**.

### State Assessments section

- Select Assessment Type - select OST
- School Years - you may select up to 3 school years to view the State Assessment
- Tests - Leave blank to include all grade level possibilities

### Non-State Assessment section

- Third Party Assessments - Select the assessment utilized by your district, such as Acadience Learning ALO, Acadience ALO - PM, i-Ready, or STAR Renaissance
- District Assessment - Select if you wish to view your Progress Monitoring data or other custom assessments
- School Year - Select this school year 2025-2026

### Include Course Marks

- Check if you would like to include the student's course grades

Select additional filters as you wish to narrow the results by Grade Level, a Teacher's class, or an additional subgroup.

Click the headings to sort by the score in that column, and click the paper icon in the top right to export to Excel for further analysis.

		2024-2025 OST						2025-2026 STAR Renaissance (New)										
		Gr 4 ELA				Reading - Scaled Score				Reading - Grade Equivalent				Reading - Normal Curve Equivalent				
#	Name	Grade	Score	Read Info Test	Read Lit Test	Writing	Oct	Nov	Dec	Jan	Oct	Nov	Dec	Jan	Oct	Nov	Dec	Jan
1		05	678 P.L. Base	📄	📄	📄	863	969	998		2	3.7	4.3		13.1	33	40.1	
2		05	665 P.L. Lim	📄	📄	📄	972	983	1013		3.7	4	4.8		34.4	37.1	44.7	
3		05	674 P.L. Base	📄	📄	📄	974	1026		1047	3.8	5.2		6.2	35.1	49.5		55.9
4		05	635 P.L. Lim	📄	📄	📄	985	974	1027		4	3.8	5.3		38.3	34.4	48.9	

## IMPORT ASSESSMENT SCORES CHECKLIST

As student assessment scores are returned from testing vendors, they must be imported into the SIS to be reported to ODEW via EMIS. Frontline provides a **Period A - Assessment Checklist** that outlines how each assessment type can be imported. The NEOnet Student Services team will host a virtual training session reviewing this checklist on **March 12 at 9:00 a.m.**

## USING EMIS CROSSCHECK DURING STUDENT ASSESSMENT SEASON

EMIS CrossCheck has the following checks that may assist with monitoring assessment data.

**Accommodations Mismatch:** If the FA records report an accommodation and the student's FD record does not have a corresponding served by 504, disability code, EL status, or a combination of statuses reported, the student appears on this check.

**Grade Level at the time of Test matches the State Equivalent Grade Level.** This check is comparing the Student Grade Level on the FA record is the same as the State Equivalent Grade Level on the FD for the date the test was taken.

Alt. Assessment by Grade Dashboard  
Acceleration Counts by Grade & Subject Dashboard  
Competency Overview by Grade Dashboard

## STRUGGLING WITH ASSESSMENT MAINTENANCE IN YOUR DISTRICT? NEONET CAN HELP!

NEOnet provides Student Assessment Services as a cost-effective, efficient resource to maintain school districts' student assessment data. This service ensures the district's crucial assessment data is accurate, reported, and ready to be analyzed. The service features creating Pre-Identification testing files; Score imports into districts' Student Information System; Score imports into districts' Data Analytics tool; Vendor database maintenance; ODDEX extract and import for transfer students; and Assistance with EMIS assessment reporting. For more details or a quote, reach out to **[studenthelp@neonet.org](mailto:studenthelp@neonet.org)**.

Assessment season can be demanding, but early preparation and awareness of these updates will help districts stay on track. As always, please reach out with questions or if you need assistance to **[studenthelp@neonet.org](mailto:studenthelp@neonet.org)** or **[emishelp@neonet.org](mailto:emishelp@neonet.org)**.

# PowerSchool ERP 25.7 Highlights

POWERSCHOOL ERP

## FOCUSED UPDATES FOR PAYROLL AND HR TEAMS

The PowerSchool ERP 25.7 upgrade includes several targeted improvements to reduce manual cleanup, improve accuracy, and give payroll and HR users better visibility during key processes. Below are a few updates you should be aware of as you prepare for or begin using 25.7.

## TERMINATION ENHANCEMENTS: LAST DATE WORKED

The termination process has been updated to better align employee end dates across the system.

The **Last Date Worked** field is now required when terminating an employee. This date automatically updates the employee's pay rate end date, helping ensure pay rates close correctly and reducing the chance of open or lingering pay records. The **Last Date to Pay** continues to control the employee's overall pay end date, keeping payroll processing aligned with actual work and payment timelines.

These changes help create cleaner employee records and reduce the need for manual corrections after termination.

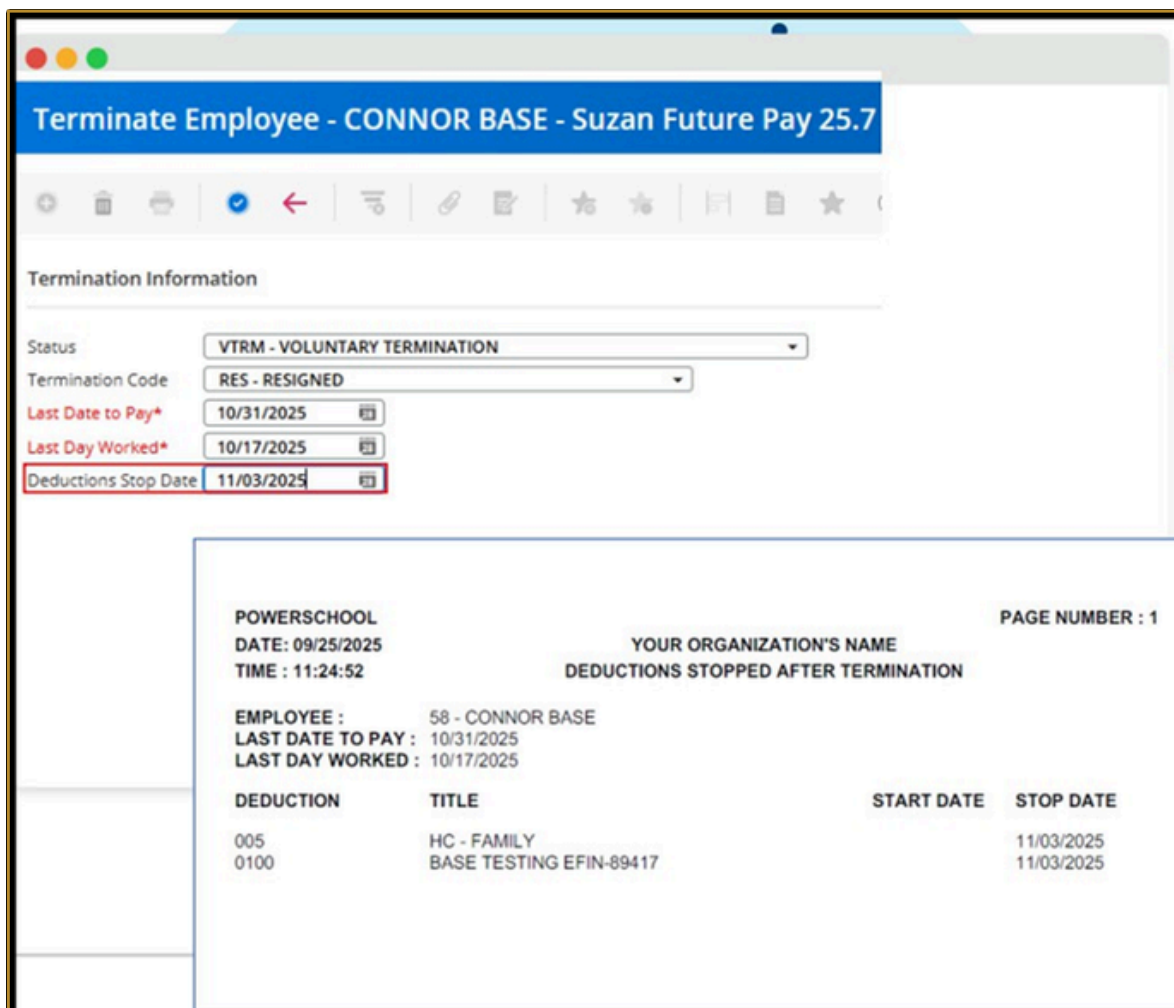
The screenshot displays two overlapping windows from the PowerSchool ERP 25.7 interface. The top window, titled "Terminate Employee - CONNOR BASE - Suzan Future Pay 25.7", shows the "Termination Information" section. It includes fields for "Status" (VTRM - VOLUNTARY TERMINATION), "Termination Code" (RES - RESIGNED), "Last Date to Pay\*" (10/31/2025), "Last Day Worked\*" (10/17/2025), and "Deductions Stop Date" (11/03/2025). The bottom window, titled "Pay Rate Information - CONNOR BASE (58) - Suzan Future Pa", shows the "Rate Information" section. It includes fields for "Job Class" (10 - RS JOB 1), "Pay Code" (001 - REGULAR PAY - ADMIN), "Pay Group" (B - PAY GROUP B), "Status" (T - Terminated), "Calendar" (G26 - GENERAL 2025-26), "Start Date" (07/01/2025), "End Date" (10/17/2025), "Pay Start Date" (07/15/2025), "Pay End Date" (10/31/2025), "Days Worked" (77.00), and "Pay Cycle". Red and blue arrows point from the "Last Day Worked" field in the top window to the "End Date" field in the bottom window, and from the "Last Date to Pay" field in the top window to the "Pay End Date" field in the bottom window.

## TERMINATION ENHANCEMENTS: DEDUCTION STOP DATE

Another improvement to the termination process addresses deductions that may otherwise remain active.

When an employee is terminated, the system now automatically applies a **Deduction Stop Date** to any active deductions that do not already have one. A report is generated to show which deductions were updated, giving payroll staff clear visibility into what changed.

This helps prevent deductions from continuing after an employee leaves and reduces the risk of post-termination cleanup.



Terminate Employee - CONNOR BASE - Suzan Future Pay 25.7

Termination Information

Status: VTRM - VOLUNTARY TERMINATION  
Termination Code: RES - RESIGNED  
Last Date to Pay\*: 10/31/2025  
Last Day Worked\*: 10/17/2025  
Deductions Stop Date: 11/03/2025

POWERSCHOOL  
DATE: 09/25/2025  
TIME : 11:24:52

PAGE NUMBER : 1  
YOUR ORGANIZATION'S NAME  
DEDUCTIONS STOPPED AFTER TERMINATION

EMPLOYEE : 58 - CONNOR BASE  
LAST DATE TO PAY : 10/31/2025  
LAST DAY WORKED : 10/17/2025

DEDUCTION	TITLE	START DATE	STOP DATE
005	HC - FAMILY		11/03/2025
0100	BASE TESTING EFIN-89417		11/03/2025

## NEW PRE CALC REPORT: DISTSUM

A new report called **DISTSUM** is now included as part of the Pre Calc process.

This report provides a summary of payroll distributions by budget unit and account code before payroll is calculated. It allows payroll staff to review how payroll will be charged in advance, making it easier to identify potential distribution or coding issues early in the process.

Catching issues at this stage can save time by avoiding recalculations later.

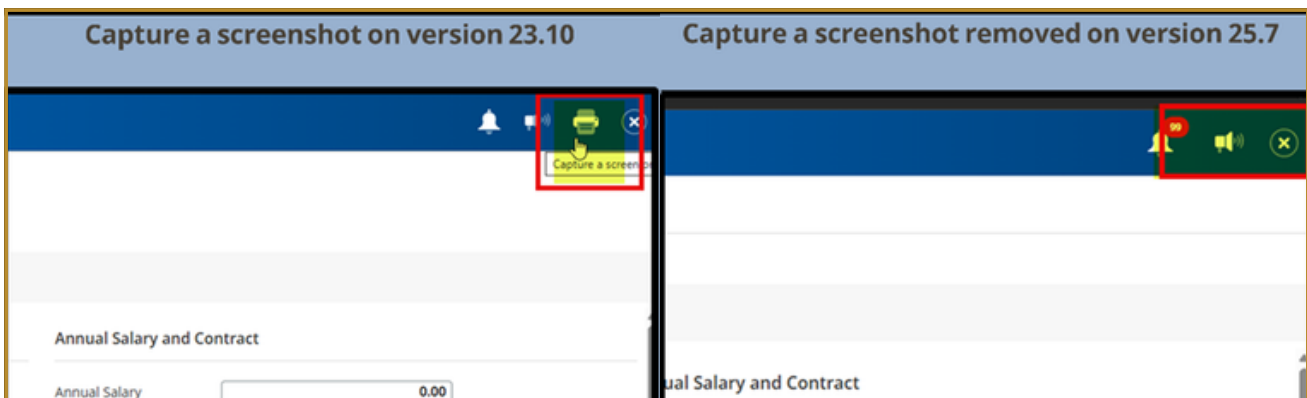
PowerSchool		PRECAL-DISTRIBUTION SUMMARY REPORT		PAGE NUMBER: 1			
DATE: 01/26/2026		PAY RUN 118 01/23/2026		PAY PERIOD END 01/10/2026			
TIME: 14:55:40							
FUND	budget unit	ACCOUNT	JOB CLASS	TITLE	PAY CODE TITLE	EMPLOYEE NUMBER	AMOUNT CHARGED
0010000	0111100000205000	111	230	TEACHER ASSIGNMENT	184 001 SALARY		3,490.56
0010000	0111100000205000	111	230	TEACHER ASSIGNMENT	184 001 SALARY		3,780.55
0010000	0111100000205000	111	230	TEACHER ASSIGNMENT	184 001 SALARY		2,377.16
0010000	0111100000205000	111	230	TEACHER ASSIGNMENT	184 001 SALARY		3,603.34
0010000	0111100000205000	111	230	TEACHER ASSIGNMENT	184 001 SALARY		3,708.95
0010000	0111100000205000	111	230	TEACHER ASSIGNMENT	184 001 SALARY		3,852.15
0010000	0111100000205000	111	230	TEACHER ASSIGNMENT	184 001 SALARY		3,603.34
0010000	0111100000205000	111	230	TEACHER ASSIGNMENT	184 001 SALARY		3,780.55
0010000	0111100000205000	111	230	TEACHER ASSIGNMENT	184 001 SALARY		3,923.75
0010000	0111100000205000	111	230	TEACHER ASSIGNMENT	184 001 SALARY		3,852.15
0010000	0111100000205000	111	230	TEACHER ASSIGNMENT	184 001 SALARY		2,164.15
0010000	0111100000205000	111	230	TEACHER ASSIGNMENT	184 001 SALARY		3,923.75
TOTAL ACCOUNT							42,060.40
TOTAL budget unit							42,060.40

### PAY RATE PRINT OPTION UPDATE

In PowerSchool ERP 25.7, the option to print the Pay Rate screen directly from eFinancePlus is no longer available.

If you need a copy of the Pay Rate screen for reference or documentation, you will now need to use a screen capture or screenshot tool instead. This change does not affect pay rate setup or payroll calculations. It only impacts how the information is captured for review or record-keeping.

Payroll users may want to confirm what screen capture tools are available on their computers after upgrading, so they are prepared when they need to save or share pay rate information.



# New User Account(s) for State Software

## STATE SOFTWARE

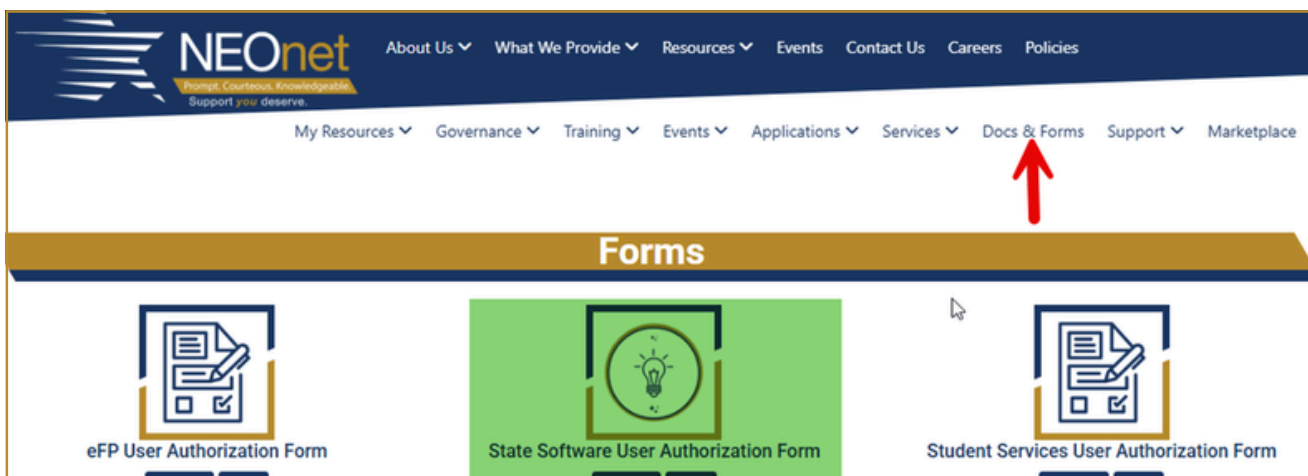
If your district has migrated to multi-factor authentication (miniOrange) and you have new users for USAS/USPS/Inventory, the process begins at the local level with your local Technology Department and not with NEOnet.

Your local technology department **must first** create the miniOrange account for any new users, including auditor access. Once the user has been created locally, your local technology department can provide you with the **USERNAME**. That information must be included on the User Authorization Form **BEFORE** sending the form to [FiscalHelp@neonet.org](mailto:FiscalHelp@neonet.org).

The **USERNAME** should be included on the form in the area highlighted below:

The screenshot shows the 'STATE SOFTWARE USER ACCOUNT AUTHORIZATION' form. At the top, there are three radio buttons: 'New Account' (selected), 'Change Existing Account', and 'Inactivate Account'. Below these are several input fields: '- SCHOOL DISTRICT -', '- BUILDING -', '- FIRST NAME -', '- LAST NAME -', '- DISTRICT EMAIL -', '- TITLE -', '- PHONE NUMBER -', '- PHONE EXT -', and '- USERNAME -'. A red arrow points to the '- USERNAME -' field, which is currently blank.

We have revised the form to make this field “fillable” so that you can just type in the **USERNAME** provided by your local technology department. The updated form can be found on the NEOnet website, but only after you log in. Click on **Documents & Forms**:



Any forms we receive for a miniOrange district with this field left blank will be returned to you for revision before we can create the account. For any questions, please contact us at [FiscalHelp@neonet.org](mailto:FiscalHelp@neonet.org).

# CONTACT US: 330-926-3900

\* Press 0 for  
the HelpDesk

## **NEonet Directors**

Matthew Gdovin  
Ext. 601100

Chris Zolla  
Ext. 601110

## **Leadership**

Michele Baker  
Ext. 601113

Cody Lyons  
Ext. 601119

Walter Davis  
Ext. 601165

Bonnie Manchester  
Ext. 601120

Andy Melick  
Ext. 602730

Jason Smith  
Ext. 601115

## **Support Staff**

Roxanna Bennett  
Ext. 601133

Alyssa Green  
Ext. 601164

Sydney Harrell  
Ext. 601184

Denise Marrali  
Ext. 601101

Danielle Ola  
Ext. 601141

Meagan Pfahler  
Ext. 602120

Lori Samerdak  
Ext. 601143

Melanie Woodward  
Ext. 601192

## **Educational Technology - Ext. 601160**

Tamra Dugan  
Ext. 601128

Noah Himes  
Ext. 601117

Ryan McLaughlin  
Ext. 601131

Dan Niessen  
Ext. 601106

Chris Potter  
Ext. 601163

Julia Tilton  
Ext. 601182

## **EMIS Services - Ext. 601140**

Mary Dolis  
Ext. 601102

Renee Eckstine  
Ext. 601155

Yvonne Fisher  
Ext. 601104

Alexandra Holowatyj  
Ext. 601139

Darlene Neel  
Ext. 601157

Alicia Paulsey  
Ext. 602120

Elizabeth Pfeiffer  
Ext. 601187

Emily Roberts  
Ext. 601118

Sara Skraba  
Ext. 601103

Sandy Sparr  
Ext. 602210

Janet Snyder  
Ext. 602220

Vickie Stima  
Ext. 602240

Catherine Wright  
Ext. 601126

## **Fiscal Services - Ext. 601130**

Teresa Bichsel  
Ext. 601105

Rachel Caudill  
Ext. 602310

Michelle Ingersol  
Ext. 601136

Larry Lifer  
Ext. 602330

Chelsea Kerr  
Ext. 601189

Lisa Nash  
Ext. 601121

Jessica Ross  
Ext. 602340

Susanne Searl  
Ext. 601153

## **Student Services - Ext. 601140**

Julie Combs  
Ext. 601142

Lori Conrad  
Ext. 601129

Jennifer Cottrill  
Ext. 601114

Janet Hayes  
Ext. 601112

Bethany Ladich  
Ext. 601138

Jaycen Rollison  
Ext. 601194

Jacqueline Tupps  
Ext. 602630

Leslie Wiseman  
Ext. 602620

## **Technical Applications - Ext. 601180**

Steven Foster  
Ext. 601156

Hunter Harbison  
Ext. 601173

Mike Hoffman  
Ext. 601108

Jerry McMillen  
Ext. 601196

## **Developers - Ext. 601180**

Theodore Drewek  
Ext. 601174

Leo Galleguillos  
Ext. 601178

Nicholas Tysh  
Ext. 601183

Michael  
Weitzenhoffer  
Ext. 601198

## **Technical Services - Ext. 601150**

Mark Banks  
Ext. 602720

Mark Baughman  
Ext. 602740

Devon Bennett  
Ext. 601124

Ben Claussen  
Ext. 601125

Nate Coffey  
Ext. 602750

Andrew Doedyns  
Ext. 601186

Ian Guier  
Ext. 601137

Cyrus Elder  
Ext. 601116

Justice Jones  
Ext. 601151

Andrew Klich  
Ext. 601146

Matthew Klich  
Ext. 601188

Brian Mangan  
Ext. 601204

Jay Milliron  
Ext. 601147

Steven Monea  
Ext. 601152

Jacob Pettay  
Ext. 601185

Aly Powell  
Ext. 601145

Joe Prekop  
Ext. 601134

Brian Ruffner  
Ext. 601207

Tristan Smith  
Ext. 601149

James Swartwood  
Ext. 601179

Tim Tracy  
Ext. 601109

Randall Winkhart  
Ext. 601154

## **District Technology Services**

John Gill  
Ext: 601162

Eric Spencer  
Ext. 601144

Brett Tomic  
Ext. 532024

Dustin Stoll  
Ext. 601242

Alexis Collins  
Ext. 571261

Sarah Burkett  
Ext. 601227

Matthew Olah  
Ext. 601235

Matthew Wakeley  
Ext. 601246

Thomas Haddad  
Ext. 601247

Joshua Cramer  
Ext. 705440

Hailey Sheppard  
Ext. 601248

Steven Hammond  
Ext. 602013

Cody Crano  
Ext. 601228

Anthony Priola  
Ext. 601224

Martin Schuster  
Ext. 601249

William Schneider  
Ext. 601236

Brandon Farley  
Ext. 601245

Ethan Avers  
Ext. 601225

Jacob Seiler  
Ext. 601240

Anthony Dipane  
Ext. 601191

Harold Murphy  
Ext. 601250

Owen Niedermier  
Ext. 602760

Donald Bracci  
Ext. 601132